

Product information

Antibody name: anti-CF₁δ (AtpD) subunit of ATP synthase

Product number: A06C-1

Product description: polyclonal antibody;
contain 0.01% NaN₃

Origin: rabbit

Immunogen: isolated CF₁δ subunit of the chloroplast ATP synthase complex from *Chlamydomonas*

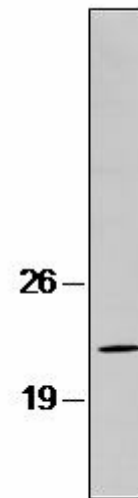
Applications: Western blot (1 : 2.000)

Immunocrossreaction: *Chlamydomonas*, higher plants, cyanobacteria

Storage: short term +4°C; long term -20°. Repeated freezing and thawing is not recommended.

Quantity: 100 µl

Protein description: The chloroplast ATP synthase belongs to the family of F1-type ATPases, which are also present in bacteria and mitochondria. ATP synthase generates ATP from ADP and inorganic phosphate using energy derived from a trans-thylakoidal electrochemical proton gradient. ATPδ subunit of appr. 23 kDa belongs to a stator part of ATP synthase and may be involved in the mechanic energy storage.



Western blot analysis of *Chlamydomonas* thylakoid membranes with anti-CF₁δ

For research purposes only