

## Product information

**Antibody name:** anti-CF<sub>0</sub>IV (AtpI) subunit of ATP synthase

**Product number:** A11S-1

**Product description:** polyclonal antibody; contains 0.01% NaN<sub>3</sub>

**Origin:** rabbit

**Immunogen:** isolated CF<sub>0</sub>IV subunit of the chloroplast ATP synthase complex

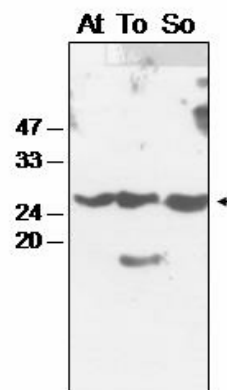
**Applications:** Western blot (1 : 2.000 for ECL)

**Immunocrossreaction:** higher plants, *Chlamydomonas*

**Storage:** short term +4°C; long term -20°. Repeated freezing and thawing is not recommended.

**Quantity:** 100 µl

**Protein description:** The chloroplast ATP synthase belongs to the family of F1-type ATPases, which are also present in bacteria and mitochondria. ATP synthase generates ATP from ADP and inorganic phosphate using energy derived from a trans-thylakoidal electrochemical proton gradient. The transmembrane CF<sub>0</sub>IV subunit of appr. 25 kDa belongs to a stator part of ATP synthase and is involved in the proton translocation.



Western blot analysis of *Arabidopsis* (At), tobacco (To) and spinach (So) chloroplast proteins with anti-CF<sub>0</sub>IV.

*For research purposes only*