

Product information

Antibody name: anti-protease Slr1821

Product number: P02S-1

Product description: polyclonal antibody;
contains 0.01% NaN₃

Origin: rabbit

Immunogen: synthetic peptide (a. a. 216 – 230)
specific for protease Slr1821 from *Synechocystis* sp.
PCC 6803

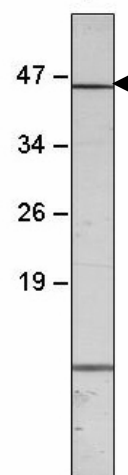
Immunodetection: Western blot (1 : 2.000 for ECL)

Immunocrossreaction: *Synechocystis* sp. PCC 6803

Storage: short term 4°C, long term -20°C. Repeated
freezing and thawing is not recommended.

Preimmune serum (product number P02S-PI): can
be ordered with anti-protease Slr1821

Quantity: 100 µl
Syn



Western blot analysis of
Synechocystis sp. PCC 6803
membrane proteins with anti-
protease Slr1821

Protein description: Slr1821 is a transmembrane metallo-protease of *Synechocystis* sp. PCC 6803. This protease belongs to SP2-type metallopeptidases, the key player of intra-membrane proteolysis. The second homologous component in *Synechocystis* is encoded by *slr0528* gene (corresponding antibody products No.: P01S-1; P01S-2). The protein analysis showed that Slr1821 protein contains one PDF domain, which is involved in the protein-protein interactions, while Slr0528 has no PDF domain. These data argues for different functions of Slr1821 and Slr0528 proteases.

For research purposes only