

## Product information

**Antibody name:** anti-Deg1

**Product number:** P04A-2

**Product description:** polyclonal antibody;  
contains 0.01% NaN<sub>3</sub>

**Origin:** rabbit

**Immunogen:** recombinant Deg1 protein from  
*Arabidopsis thaliana* (At3g27935; MIPS)

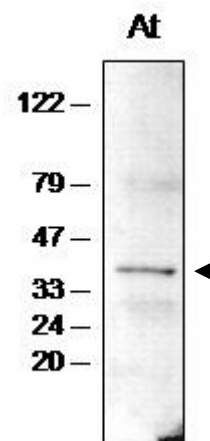
**Immunodetection:** Western blot (1 : 1.000 for ECL).

**Immunocrossreaction:** crossreacts with Deg5  
protein in *Arabidopsis thaliana*; possibly crossreacts  
with Deg protein(-s) from other higher plants

**Storage:** short term +4 °C, long term -20 °C. Repeated  
freezing and thawing is not recommended.

**Quantity:** 300 µl

**Protein description:** Deg1 belongs to the Deg-family of serine-type proteases. Analysis of the *Arabidopsis* genome revealed 14 genes encoding members of Deg family. At least four Deg proteases (Deg1, Deg2, Deg5 and Deg8) are targeted to the chloroplast. Deg1 is peripherally attached to the luminal side of the thylakoid membrane. Recent data suggested that Deg1 cooperates with the stroma-exposed proteases FtsH and Deg2 in degrading D1 protein during repair from photoinhibition by cleaving lumen-exposed regions of the protein (Kapri-Pardes et al., 2007, Plant Cell, 19, 1039 – 1047).



Western blot analysis of  
*Arabidopsis thaliana* chloroplast  
proteins with anti-Deg1

*For research purposes only*