

## Product information

**Antibody name:** anti-SppA1

**Product number:** P09A-1

**Product description:** polyclonal antibody;  
contains 0.01% NaN<sub>3</sub>

**Origin:** rabbit

**Immunogen:** recombinant SppA1 protease from  
*Arabidopsis thaliana*

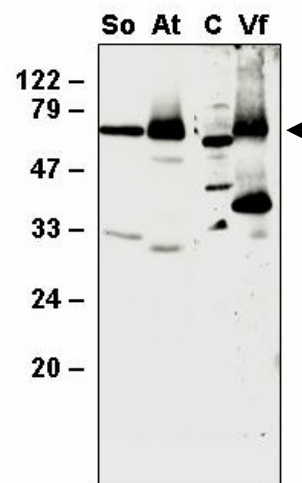
**Immunodetection:** Western blot (1 : 2.000 for ECL)

**Immunocrossreaction:** *Arabidopsis*, spinach, beans, *Chlamydomonas*; does not crossreact with *Synechocystis* sp. PCC 6803. For antibodies against *Synechocystis* SppA1 and SppA2 see the products No.: P25S-1 and P10S-1, respectively.

**Storage:** short term +4 °C; long term -20 °C. Repeated freezing and thawing is not recommended.

**Quantity:** 100 µl

**Protein description:** SppA1 is a 66 kDa serine-type protease found in thylakoid membranes of photosynthetic organisms. This family is represented in higher plants by one component, in most cyanobacteria – by two proteins (SppA1 and SppA2). SppA1 is a light activated protease and may be involved in the acclimation of photosynthetic membranes to high light (Lensch et al., J. Biol. Chem. 276, 33645 – 33651).



Western blot analysis of thylakoid proteins from *Spinacia oleracea* (So), *Arabidopsis thaliana* (At), *Vicia faba* (Vf) and the whole cellular proteins from *Chlamydomonas* (C) with anti-SppA1

*For research purposes only*