

## Product information

**Antibody name:** anti-Deg2 (At2g47940, MIPS)

**Product number:** P23A-1

**Product description:** polyclonal antibody;  
contains 0.01% NaN<sub>3</sub>

**Origin:** rabbit

**Immunogen:** synthetic peptide (a. a. 69 – 83) against  
*Arabidopsis* DegP protein (At2g47940; MIPS)

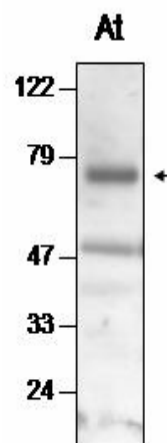
**Immunodetection:** Western blot (1 : 1.000 for ECL)

**Immunocrossreaction:** specific against Deg2  
protease from *Arabidopsis thaliana*

**Storage:** short term +4 °C; long term -20 °C. Repeated  
freezing and thawing is not recommended.

**Quantity:** 200 µl

**Protein description:** Deg2 protease belongs to the family of serine-type proteases. Analysis of the *Arabidopsis* genome revealed 14 genes encoding members of Deg family. At least four Deg proteases (Deg1, Deg2, Deg5 and Deg8) are targeted to the chloroplast. Deg2 is peripherally attached to the stromal side of the thylakoid membrane. An *in vitro* study, recombinant Deg2 was demonstrated to cleave the D1 protein after exposure to high light. However, a recent *in vivo* study with mutants lacking Deg2 demonstrated that Deg2 is not essential for D1 degradation (Huesgen et al., FEMS Lett, 580, 6929 – 6932).



Western blot analysis of  
*Arabidopsis thaliana* thylakoid  
proteins with anti-Deg2

*For research purposes only*