

## Product information

**Antibody name:** anti-SppA1-Syn

**Product number:** P24S-1

**Product description:** polyclonal antibody;  
contains 0.01% NaN<sub>3</sub>

**Origin:** rabbit

**Immunogen:** synthetic peptide (a. a. 305 - 320)  
specific for SppA1 protease from *Synechocystis* sp.  
PCC 6803

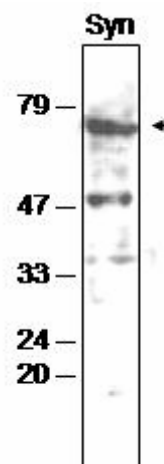
**Immunodetection:** Western blot (1 : 1.000 for ECL)

**Immunocrossreaction:** *Synechocystis* sp. PCC  
6803. For antibodies against higher plant SppA1 and  
*Synechocystis* SppA2 see the products No.: P9S-1/2  
and P10S-1/2, respectively.

**Storage:** short term +4 °C; long term -20 °C. Repeated  
freezing and thawing is not recommended.

**Quantity:** 200 µl

**Protein description:** SppA1 is 66 kDa serine-type protease found in thylakoid  
membranes of photosynthetic organisms. SppA protease family is represented in higher  
plants by one component, in most cyanobacteria – by two proteins (SppA1 and SppA2).  
SppA1 is a light-induced protease and may be involved in the acclimation of  
photosynthetic membranes to high light (Lensch et al., J. Biol. Chem. 276, 33645 –  
33651). In cyanobacteria SppA1 is involved in the degradation of linker proteins of  
phycobilisome antennae under acclimation to higher light regimes (Pojidaeva et al., J.  
Bacteriol. 186, 3991 – 3999).



Western blot analysis of  
*Synechocystis* membrane  
proteins with anti-SppA1-Syn

*For research purposes only*

---

AntiProt  
Am Klopferspitz 19a  
82152 Martinsried  
Deutschland

Tel.: + 49 89 74442700  
Fax: + 49 721151491088  
E-mail: [info@antiprot.com](mailto:info@antiprot.com)  
Website: <http://www.antiprot.com>

VAT number: DE252917087

Bank account:  
Raiffeisenbank München-Süd  
BLZ 7169466  
Account No.: 221600  
IBAN: DE37701694660000221600  
BIC: GENODEF1M03